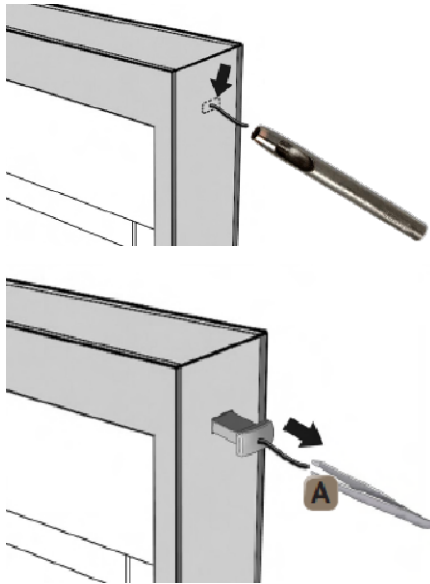
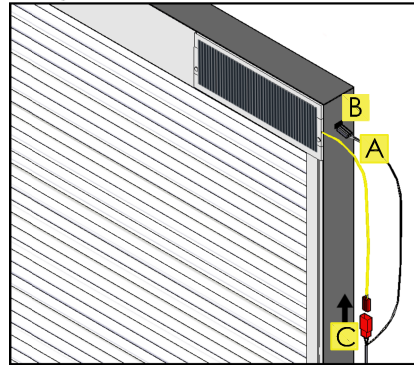


WIRING

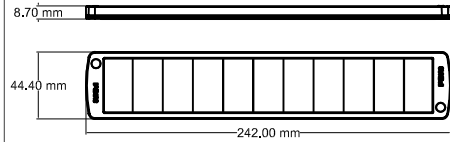


1. Carve the sealant around the cap with a cutter.
2. Remove the "A" cap pulling the thread with tweezers.



3. Plug the black connector **A** in the correct position **B**. Plug the red connector in the correct position **C**.
4. Test the correct functioning of the blind as shown in the video, then seal the lid with some IG unit silicone.

DIMENSIONS OF THE EXTERNAL SOLAR PANEL



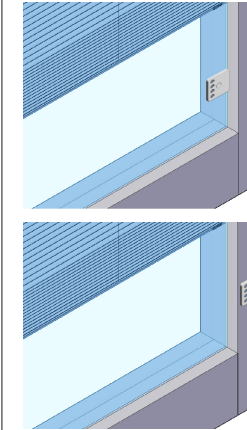
CABLE WITH CONNECTORS



CABLE LENGTH, PLEATED/DUETTE/VENETIAN BLIND:

Blind height	Command cable length
up to 1200 mm	1000 mm
1201 - 2000 mm	1500 mm
2001 - 3000 mm	2000 mm

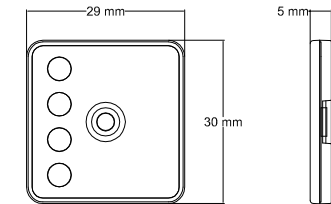
ATTACHING THE MAGNETIC CONNECTOR



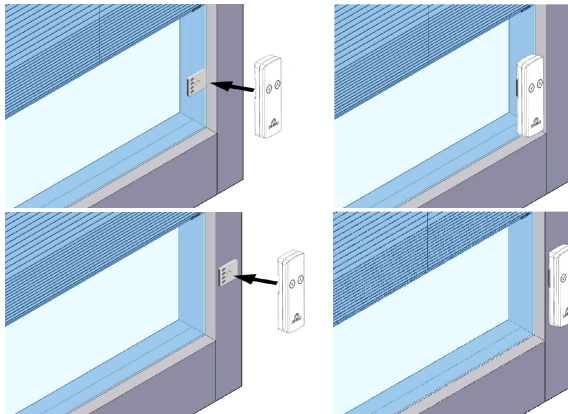
APPLICATION ON THE GLASS:
The glass has to be perfectly clean and dry. The application needs to be done at a temperature of 20°C. If the environmental temperature is very low, heat up the glass surface until reaching 20°C. Remove the backing from the connector and apply firm pressure. Firm bonding will be achieved within 72 hours.

APPLICATION ON THE FRAME:
Drill an 8 mm diameter hole and insert the cable. Remove the cap by pressing the back of the connector to create space for the screw.

CONNECTOR DIMENSIONS (mm)



RAISING AND LOWERING THE BLINDS



- a) Fit the actuator onto its base plate and activate the up or down command in order to raise or lower the blind.
- b) Press once the up or down command in order to raise or lower the blind.
- c) During the up/down movement press one of the command to stop the blind.
- d) To fill the slats, keep one of the button pressed.

RECHARGING THE ACTUATOR



- a) If the battery needs recharging, the red LED flashes.
- b) To recharge the battery plug the power supply into a power socket, then plug the micro-USB connector into the port provided. During the charge the orange LED is steadily lit.
- c) The orange LED turns off when the charging is complete.
- d) When the blue LED lights up after an UP or DOWN command, the system is running correctly.

WARNING: Do not use the actuator when in charge

UNI EN 1279-5:2005 - UNI EN 1279-6:2004 - UNI EN 1379-6:2004 - IMQ EN 55014-2-1997



Via I Maggio 44/46, 25038 Rovato (BS)
TEL +39 030 7704635 - FAX +39 030 7704607
www.sunbell.it



**INSTALLATION
BLIND WITH EXTERNAL SOLAR PANEL**

*RECHARGEABLE BATTERY ACTUATOR
FOR RAISING, LOWERING AND TILTING
FUNCTIONS*

Video instructions

