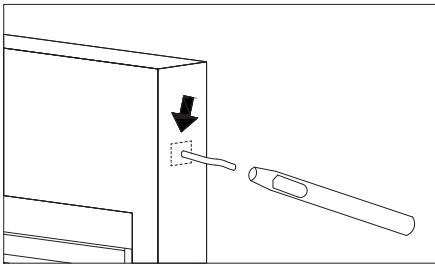
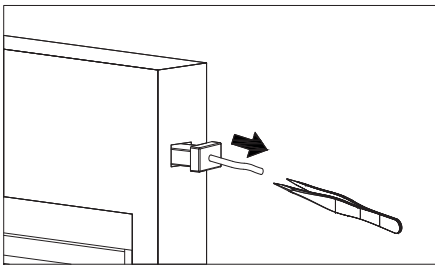


**WIRING**

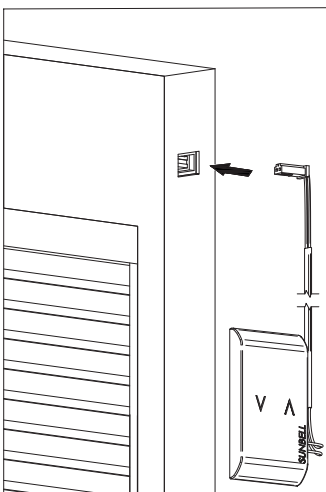


1. Carve the sealant around the cap with a cutter.

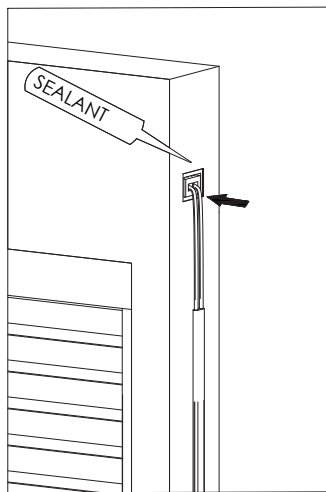


2. Remove the cap pulling the thread with tweezers.

3. Test the correct functioning of the blind with Sunbell test kit.



4. Insert the connector in the correct position.



5. Seal the lid with IG unit sealant.

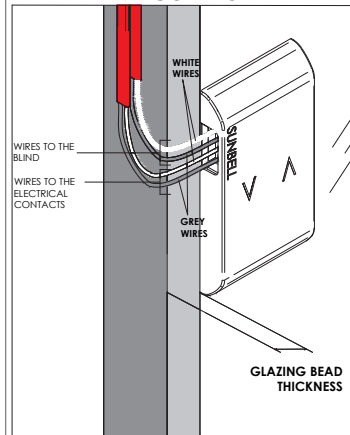
**CABLE LENGTH, PLEATED/DUET/VENETIAN BLIND:**

Blind height	Command cable length
up to 1200 mm	1000 mm
1201-2000 mm	1500 mm
2001-3000 mm	2000 mm

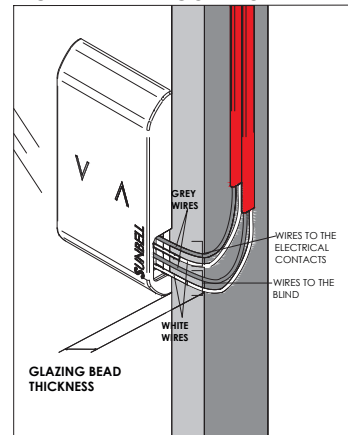
**INSTALLING THE CONTROL PANEL ON THE GLASS**

1. The glass has to be clean and dry.
2. If the environmental temperature is very low, heat up the glass surface until reaching 20°C. Remove the backing from the control panel and apply firm pressure.
3. Connect the wires to the electrical contact connectors (as shown in page 4).

**LEFT HANDED CONTROL**



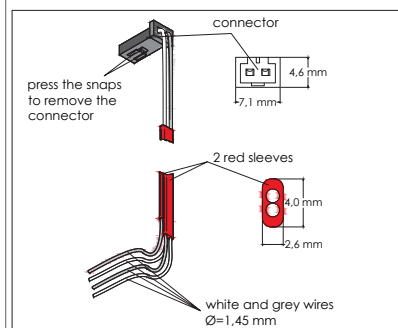
**RIGHT HANDED CONTROL**



**INSTALLING THE CONTROL PANEL ON THE FRAME**

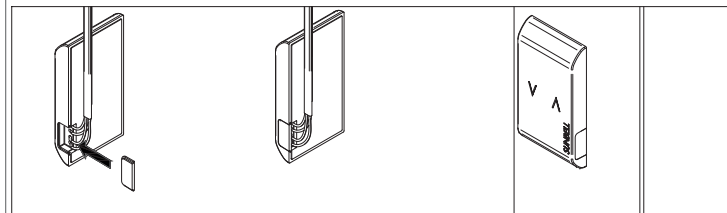
1. It is necessary to drill some holes onto the frame in order to make space for the wires.

**DIMENSIONS :**



If needed it is possible to remove the connector in order to let the wires pass through the holes: press the snaps on the lower side of the connector to remove it. **Then put back the wires in the original position.**

2. Insert the side cap before sticking the control panel onto the frame.



3. The surface of the frame must be clean and dry.
4. Stick the control panel on the frame, by using the biadeshiva provided.
5. Connect the wires (as shown in page 4).

www.sunbell.it  
 TEL +39 030 7704635 - FAX +39 030 7704607  
 Via I Maggio 44/46, 25038 Rovato (BS)

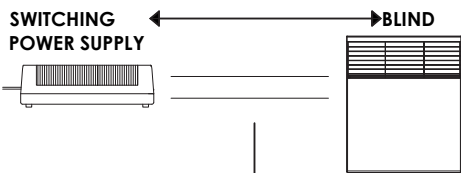
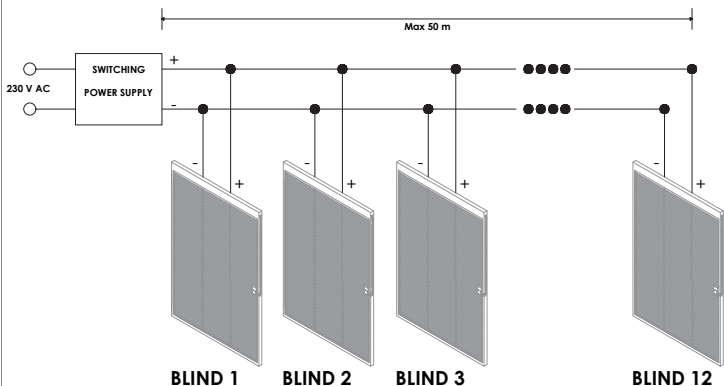


**INSTALLATION AND USE**

**MOTORIZED BLINDS WITH "ALL IN ONE" CONTROL SYSTEM**

### ELECTRICAL WIRING DIAGRAM

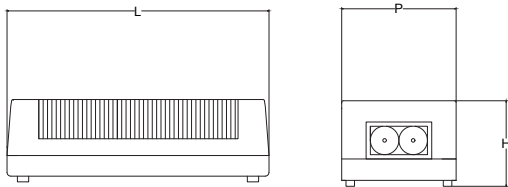
- It is possible to install both single blinds and groups of blinds (up to 12 blinds per group). Each group need one power supply.
- Blinds input: 12V DC.
- Maximum electrical absorption for each blind: 1A.
- Maximum distance between power supply and each blind: 50m.



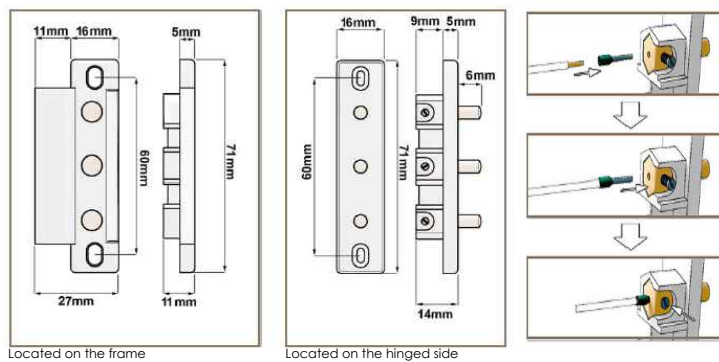
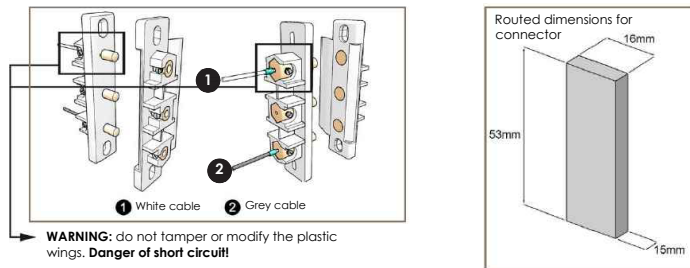
Maximum distances between power supply and blinds	
distance	wire section
12 m	0.25 mm <sup>2</sup>
20 m	0.50 mm <sup>2</sup>
40 m	1.00 mm <sup>2</sup>
50 m	1.50 mm <sup>2</sup>

### POWER SUPPLY DIMENSIONS

- L 156 mm x P 68 mm x H 40 mm (12 blinds)
- L 128 mm x P 52 mm x H 32 mm (8 blinds)
- L 108 mm x P 47 mm x H 29 mm (4 blinds)
- L 96 mm x P 45 mm x H 31 mm (2 blinds)

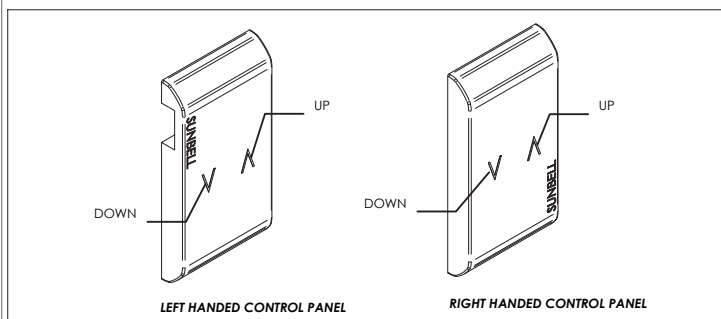


### ELECTRICAL CONTACT CONNECTORS



### USING THE CONTROL PANEL

**MOVING THE BLIND:**  
The blind is controlled through capacitive sensors in the "ALL IN ONE" control panel. Touch once the "UP" or "DOWN" arrow to raise or lower the blind (automatic mode).



- To change direction of the blind's movement stop it by touching the "UP" or "DOWN" arrow, then touch the "UP" or "DOWN" arrow once more.
- Touch and hold the "UP" or "DOWN" arrow to raise or lower the blind in slow mode.
- Touch and hold the arrow opposite to the last one touched to tilt the slats (function not available with fabric blinds).
- The lit blue LED and the movement of the blind indicate proper functioning.

### SETTING OF "ALL IN ONE" CONTROL PANEL

The control panel can be placed both on the right side and on the left side of the frame/glass.

The panel is delivered and properly set according to the installation position required at the time of order.

Anyway, if necessary, it is possible to switch the setting from one side to the other.

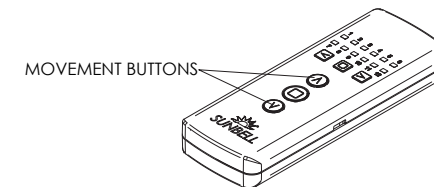
If, after touching the "UP" arrow, the blind lowers, a setting switch is needed.

### HOW TO SWITCH SETTING

Touch and hold simultaneously the "UP" and "DOWN" arrows on the "ALL IN ONE" control panel.

Hold the touch, even when the blue LEDs start flashing, till the blue LED under the "UP" arrow is steadily lit. When the led turns off the setting is made.

### GROUP CONTROL AND REMOTE CONTROL (OPTIONAL)



SUNBELL REMOTE CONTROL

The group control function for "ALL IN ONE" blinds is available through Sunbell remote control only .

### PROGRAMMING THE REMOTE CONTROL

- Touch and hold the "UP" and "DOWN" arrows on the "ALL IN ONE" control panel simultaneously for 10 seconds, till the alternate flashing of the blue LEDs.
- Within 25 seconds, turn the remote control on, select the channel you want to assign to the blind, then press one of the movement buttons.
- A 5 seconds alternate slow flashing of the blue LEDs on the "ALL IN ONE" panel, followed by a stand by mode, confirms the setting.

Repeat the procedure with each blind

### N.B.:

- A new setting on the same channel of the remote control deletes the previous one.
- It is possible to assign more than one blind to the same channel, moving multiple blinds simultaneously.

Check the remote control user's guide for further instructions.